

MPack 233A (EU)

233kWh Liquid-Cooling Battery

Highly Integrated: Combines an all-in-one design with high power density, requiring minimal space and offering flexible transportation and installation.

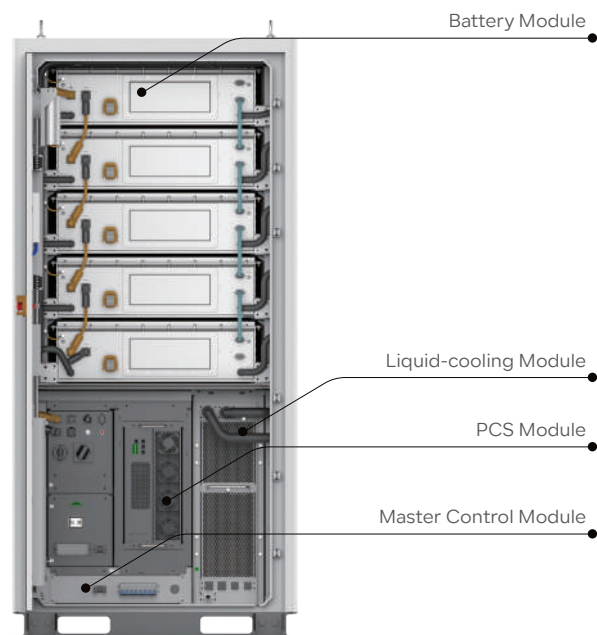
Safety & Reliability: Features comprehensive battery monitoring, multi-level fire prevention, top venting design, and proactive AI management to ensure maximum safety and reliability.

Efficient & Flexible: Boasts a modular structure with high-efficiency liquid cooling, adaptable to extreme environments, maximizing battery life and performance.

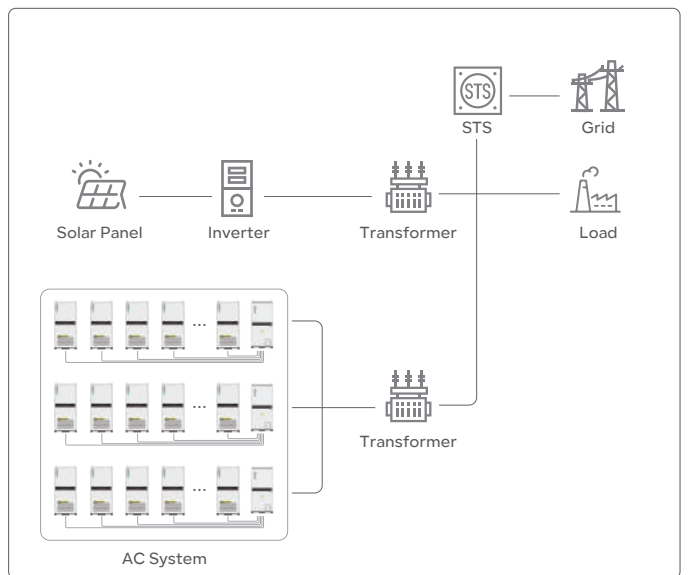
Intelligent Operation & Maintenance: Equipped with a full EMS for easy upgrades, big data-managed inspection, proactive handling, and intelligent SOC calibration for optimal performance without downtime.



System Demonstration



System Layout



Application Scenario



FARM & RANCH



SUPERCOMPUTING



MANUFACTORY

Battery Energy Storage

Cell Type	LFP 3.2V/280AH
Module Combination	1P52S
System Combination	5 modules in series
Capacity (kWh)	233
Nominal Voltage (V)	832
Operation Voltage Range (Vdc)	761-923
Discharge Depth	90% DoD
Thermal Management Mode	liquid cooling
Thermal Control Management	Aerosol Extinguishing

AC Output

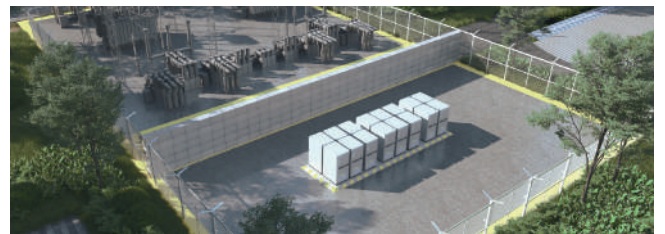
Rated AC Output Power(kW)	125
Max. AC Output Power(kVA)	150
Rated Output Voltage(Vac)	400
Output Voltage Range(Vac)	-15% - 10%(settable)
Rated Grid Frequency(Hz)	50/60
Max. Output Current(A)	182
Adjustable Power Factor	> 0.99
THDi	< 3%

System Characteristic

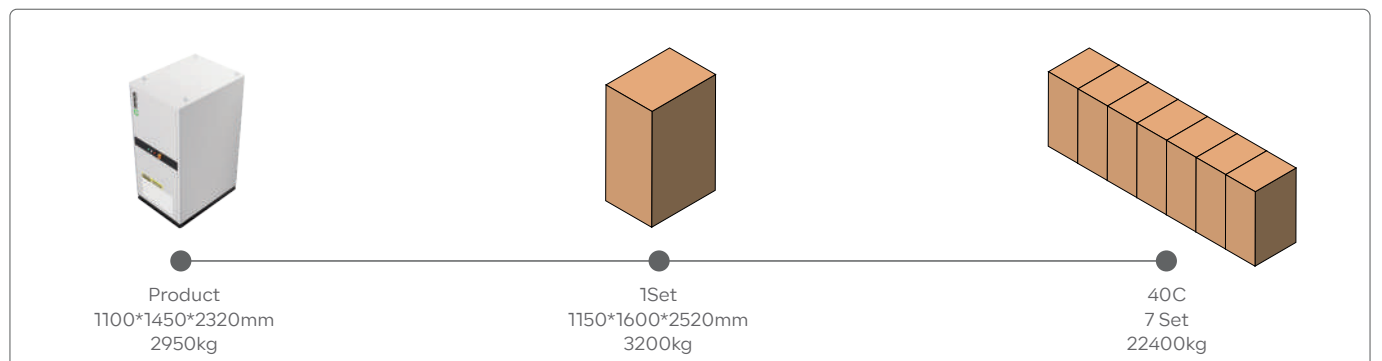
Communication Interface	CAN, RS485, Wi-Fi, LTE
Warranty	3 years free, paid from the 4th to the 15th year
Certifications	IEC62619, UL1973, UL9540A, UL9540 EN 61000-6-1/2/3/4, EN 62109-1/2

General Parameters

Battery Model	R-MP233125A1-EU
Dimensions (W*D*H)	1100*1450*2320mm / 43*57*91.3in
Total Weight	2860(±5)kg / 6305(±11)lb
Operation Altitude	2000m / 6561ft
Noise Level @1m	<75 dB(A)
IP Rating	IP54
Operating Temperature	-20°C to 55°C
Operating Humidity (RH)	0 to 95%
Storage Conditions	-20°C to 30°C Up to 95% RH, non-condensing State of Energy (SoE): 50% initial



■ Packaging & Shipping Details



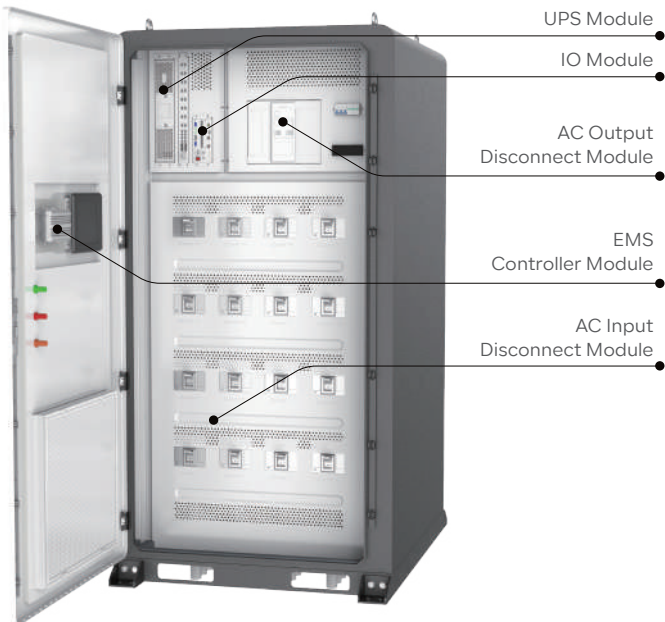
AC Combiner Cube

AC Combiner Cabinet (for Mpack 233A)

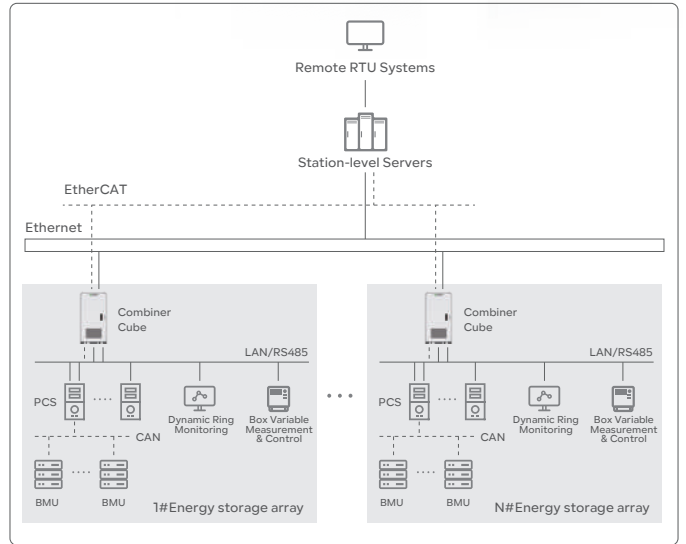
The Combiner Cube is your ideal solution for enhancing the functionality and reliability of the Mpack 233A configuration, ensuring a seamless and efficient energy management experience.



System Demonstration



System Layout



Application Scenario



Model	Combiner Cube-16EU	Combiner Cube-16C
Input Voltage(Vac)	400	690
Access Channel	16	16
Output Channel	1	1
Max. Rated Power(kW)	2000	3200
Rated Current(A)	2887	2678
Measuring Accuracy	Class 0.5 (bidirectional meter)	
Overload Protection	Yes	
UPS	Optional	

System Characteristic

Communication Interface	CAN, LAN, RS485
Warranty	3 years free, paid from the 4th to the 15th year

General Parameters

Product Model	R-AC2000ACC01-EU	R-AC3200ACC01-C
Dimensions (W*D*H)	1200*1450*2350mm / 47.2*57*92.5in	
Total Weight	1200kg / 2645.5lb	
Altitude	<2000m	
Noise Level @1m	<65 dB(A)	
IP Rating	IP54	
Operating Temperature	-35°C ~ 55°C	
Storage Temperature	-40°C ~ 70°C	
Relative Humidity(Rh)	≤95%, non-condensing	

■ Packaging & Shipping Details

